

# MONA OFFSHORE WIND PROJECT

## Annotated Photographs of the Denbighshire Memorial Park and Crematorium

Deadline: 4

Application Reference: EN010137

Document Reference: S\_D4\_13

Document Number: MOCNS-J3303-RPS-10362

4 November 2024

F01



Image of an offshore wind farm

**MONA OFFSHORE WIND PROJECT**

**Document status**

<b>Version</b>	<b>Purpose of document</b>	<b>Authored by</b>	<b>Reviewed by</b>	<b>Approved by</b>	<b>Review date</b>
F01	Submission at D4	RPS	Mona Offshore Wind Ltd	Mona Offshore Wind Ltd	4 Nov 2024

**Prepared by:**

**RPS**

**Prepared for:**

**Mona Offshore Wind Ltd.**

**MONA OFFSHORE WIND PROJECT**

---

**Contents**

**1 ANNOTATED PHOTOGRAPHS OF THE DENBIGHSHIRE MEMORIAL PARK AND CREMATORIUM ..... 1**

1.1 Introduction ..... 1

1.2 Response..... 1

## MONA OFFSHORE WIND PROJECT

### Glossary

Term	Meaning
Applicant	Mona Offshore Wind Limited.
Bodelwyddan National Grid Substation	This is the Point of Interconnection (POI) selected by the National Grid for the Mona Offshore Wind Project.
Competent Authority	Regulation 6(1) defines competent authorities as "any Minister, government department, public or statutory undertaker, public body of any description or person holding a public office".
Development Consent Order (DCO)	An order made under the Planning Act 2008 granting development consent for one or more Nationally Significant Infrastructure Project (NSIP).
Environmental Statement	The document presenting the results of the Environmental Impact Assessment (EIA) process for the Mona Offshore Wind Project.
Local Authority	A body empowered by law to exercise various statutory functions for a particular area of the United Kingdom. This includes County Councils, District Councils and County Borough Councils.
Maximum Design Scenario (MDS)	The scenario within the design envelope with the potential to result in the greatest impact on a particular topic receptor, and therefore the one that should be assessed for that topic receptor.
Mona Offshore Wind Project	The Mona Offshore Wind Project is comprised of both the generation assets, offshore and onshore transmission assets, and associated activities.
Mona Onshore Cable Corridor	The corridor between MHWS at the landfall and the Mona onshore substation, in which the onshore export cables will be located.
Mona Onshore Development Area	The area in which the landfall, onshore cable corridor, onshore substation, mitigation areas, temporary construction facilities (such as access roads and construction compounds), and the connection to National Grid substation will be located
Pre-construction site investigation surveys	Pre-construction geophysical and/or geotechnical surveys undertaken offshore and, or onshore to inform, amongst other things, the final design of the Mona Offshore Wind Project.
Relevant Local Planning Authority	The Relevant Local Planning Authority is the Local Authority in respect of an area within which a project is situated, as set out in Section 173 of the Planning Act 2008. Relevant Local Planning Authorities may have responsibility for discharging requirements and some functions pursuant to the DCO, once made.
the Secretary of State for Business, Energy and Industrial Strategy	The decision maker with regards to the application for development consent for the Mona Offshore Wind Project.
The Planning Inspectorate	The agency responsible for operating the planning process for NSIPs.

### Acronyms

Acronym	Description
BEIS	Department for Business, Energy and Industrial Strategy

## MONA OFFSHORE WIND PROJECT

Acronym	Description
DCC	Denbighshire County Council
DCO	Development Consent Order
EIA	Environmental Impact Assessment
EnBW	Energie Baden-Württemberg AG
EWG	Expert Working Group
HVAC	High Voltage Alternating Current
IEMA	Institute for Environmental Management and Assessment
VP	Viewpoint

## Units

Unit	Description
GW	Gigawatt
km	Kilometres
km <sup>2</sup>	Kilometres squared
kV	Kilovolt
MW	Megawatt
nm	Nautical miles

# 1 Annotated Photographs of the Denbighshire Memorial Park and Crematorium

## 1.1 Introduction

1.1.1.1 In section 3.34 of its Local Impact Report (REP1-049) Denbighshire County Council stated that:

*‘Visual impacts on people visiting the Denbighshire Memorial Park and Crematorium have not been assessed. The Councils have therefore, referred to the assessments made on other nearby highly sensitive receptors such as those represented by VP 5.*

*The Councils are of the opinion that users of the crematorium are highly sensitive receptors and will experience a medium magnitude of change in their view during construction and a low magnitude of change during operation. This would result in a major adverse and significant visual effect during construction and a moderate adverse and significant effect during operation.*

*The Councils request that the Applicant should review and update the assessment to clarify or correct inconsistencies’.*

## 1.2 Response

### 1.2.1 Background

1.2.1.1 The Applicant provided a response (REP1-049.17) at Deadline 2 (REP2-085) which explained that representative viewpoint 4 (view southeast from public footpath 105/7 to the southwest of Waen-Meredydd) was relevant to the views that could be experienced by individuals in the Memorial Park due to its proximity to the Memorial Park, and the views/visual amenity of people at viewpoint 4 have a high sensitivity. Therefore, the conclusions of the assessment undertaken for viewpoint 4 would be appropriate for visitors of the Memorial Park.

1.2.1.2 The Applicant agreed that visitors to the Memorial Park were high sensitivity visual receptors but the views of the Onshore Substation would be screened by intervening vegetation.

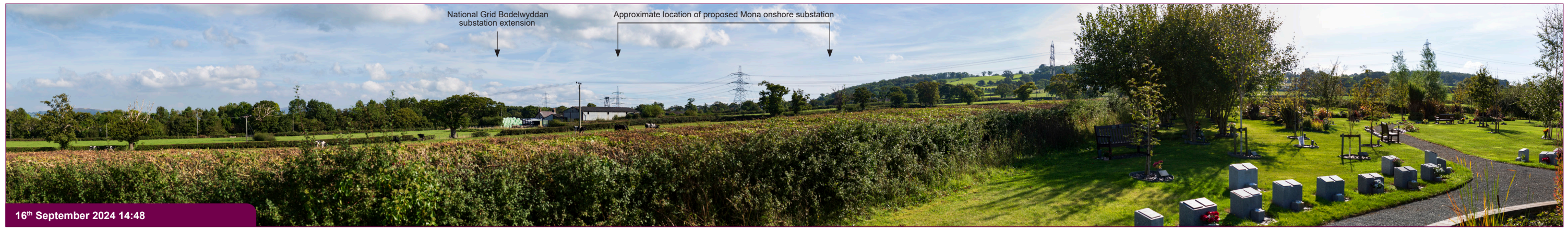
1.2.1.3 DCC were asked by the Examining Authority if they were happy with this response (Q1.13.7 of REP3-078). DCC stated that:

1.2.1.4 *The Applicant has not included an assessment of visual effects on the users of the crematorium nor is there a narrative to justify these receptors being scoped out.....It is agreed that the magnitude of impact in views from the crematorium would be slightly less than VPs 4 and 5 due to a greater intervening distance, but the magnitude of change is still considered to be medium. Combining a high sensitivity and medium magnitude should therefore, lead to a moderate to major effect... If the Applicant disagrees with the Councils’ opinion above, we suggest that it may be helpful for the Applicant to carry out a visual assessment of the effects on views of receptors at the Crematorium.’*

## **1.2.2 Annotated Photographs**

- 1.2.2.1 In response to DCC's submission, the Applicant undertook a photography survey in September 2024 from various viewpoints at Denbighshire Memorial Park and Crematorium to demonstrate its position (as presented in REP2-085).
- 1.2.2.2 The photographs were presented to DCC's landscape consultant at a Statement of Common Ground meeting (11 October 2024). The Applicant discussed the amount of existing planting around and within the Memorial Park, as well as in the wider intervening landscape. DCC requested that the photographs be annotated with extent of Mona Onshore Substation. The Applicant agreed to present the annotated photographs at Deadline 4 which are included within this document.
- 1.2.2.3 It was considered by both the Applicant and DCC that onshore representative viewpoint 4: (View southeast from public footpath 105/7, to the south of Waen-Meredydd) was a more open view that would be experienced by a high sensitivity receptor. Therefore, the significance of effects at the Denbighshire Memorial Park and Crematorium would not be greater than at VP4: i.e. that whilst the sensitivity of the receptor was high, the impact during construction and operation would be small and therefore, the significance of effect would be minor to moderate adverse, which is not significant.





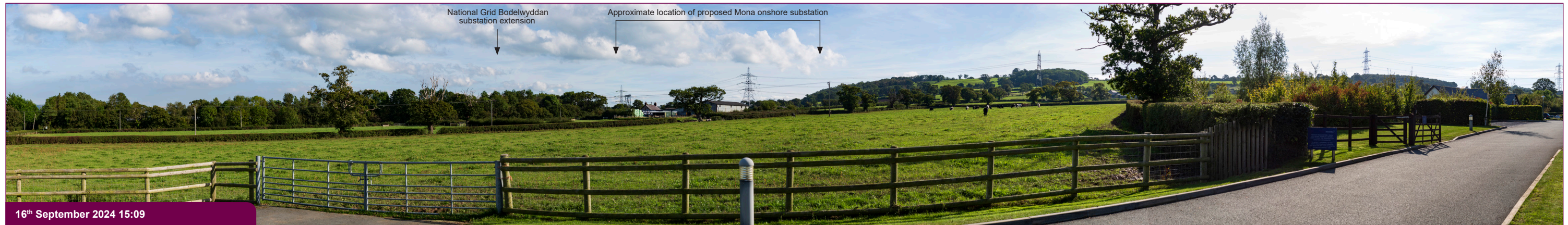
16<sup>th</sup> September 2024 14:48

Viewpoint CMP 1: View southeast from Denbighshire Memorial Park and Crematorium (OS Grid Ref: 301084, 373837)



16<sup>th</sup> September 2024 14:58

Viewpoint CMP 2: View southeast from Denbighshire Memorial Park and Crematorium (OS Grid Ref: 301043, 373773)



16<sup>th</sup> September 2024 15:09

Viewpoint CMP 3: View southeast from Denbighshire Memorial Park and Crematorium (OS Grid Ref: 301119, 373897)